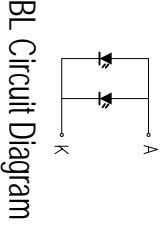


PIN	Configuration
1	SCK
2	SDA
3	/RES
4	/CS0
5	CD
6	VSS
7	VDD
8	VB0+
9	VB1+
10	VB1-
11	VB0-
12	VLCD

2.2uF/25V
2.2uF/25V
330nF/25V
VSS



HOT DISPLAY

Dwg Title: HTG128128A-25W-12C10-V01	
EDC No:	Ver: A/0
Scale: 1:1	Unit: mm
Drawn:	Checked:
Tol: ±0.2	Date: 2019-04-17

*1. LCD Display Type	STN-BLUE, Transmissive, Negative
*2. Viewing Direction	6H
*3. LCD Driver Mode	1/128Duty, 1/12Bias
*4. Operating Voltage	VDP=130V(VDD=30V)
*5. Operating Temp	-20°C~70°C
*6. Storage Temp	-30°C~80°C
*7. Driver IC	UC1617S(4-line SPI)
*8. Backlight	WHITE Vf=30V If=30mA
*9. R/DHS	